

Adam Technologies, Inc.

BATTERY HOLDERS & SNAPS

ALKALINE, LITHIUM, MOBILE & SNAPS

BH & BS SERIES

INTRODUCTION:

Adam Tech BH and BS series Battery Holders, Mobile Battery Connectors and Battery Snaps are designed to contain batteries in electronic equipment. This series includes battery holders and coin cell holders for AAA, AA, C, D, 9V and lithium coin cells. Adam Tech produces this series in a variety of terminations such as thru-hole PCB leads, SMT leads, wire leads and solder lugs. Custom lead lengths on wired configurations are also available. Our superior retention holders are molded of UL94-VO or UL94-HB material with spring steel contacts and perform extremely well under normal or adverse environment conditions.

BATTERY HOLDER SPECIFICATIONS:

Material:

Insulator: Impact resistant Polypropylene, rated UL94-HB
9V Holder, ABS, Glass filled rated UL94-HB

Insulator Color: Black

Spring: Spring Steel, Nickel plated

Contacts: Spring steel, Nickel plated

Snap terminals: Brass, Nickel plated

Wire: 26 Awg, PVC

Electrical:

Operating voltage: 1.5V to 9V DC max.

Temperature Rating:

Operating temperature: -55°C to +85°C

BATTERY SNAPS SPECIFICATIONS:

Material:

Soft PVC or rigid PP or PE

Snap terminals: Brass, nickel plated

Wire: 26 Awg stranded, UL1007, PVC insulation

Electrical:

Operating voltage: 9V max.

Temperature Rating:

Operating temperature: -55°C to +85°C

COIN CELL HOLDER & MOBILE BATTERY CONNECTOR SPECIFICATIONS:

Material:

Thru-hole: PBT Thermoplastic rated UL-94-VO

SMT: Hi-Temp Thermoplastic rated UL-94-VO

Electrical:

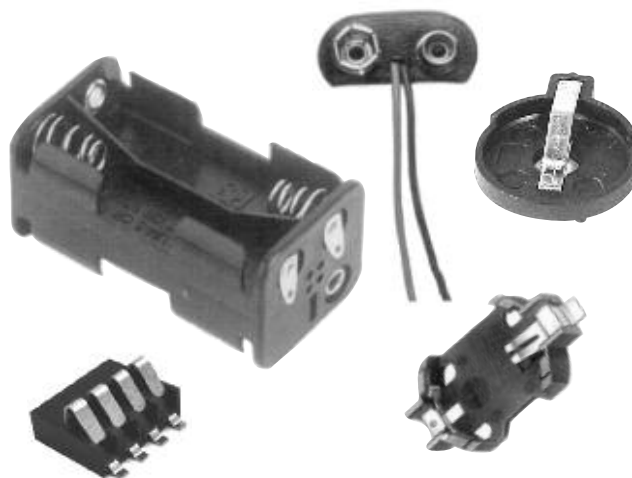
Operating voltage: 9V max.

Temperature Rating:

Operating temperature: -55°C to +85°C

SAFETY AGENCY APPROVALS:

Manufactured with UL Recognized and
CSA Certified Materials



ORDERING INFORMATION BATTERY HOLDER

BH	01	3
SERIES INDICATOR BH = Battery Holder	TYPE 01 thru 41	TERMINATION 1 = PCB Thru Hole 2 = Male/Female Snaps 3 = Solder Terminals 4 = Wire Leads 5.90 [150.00] 5 = SMT

BATTERY SNAPS

BS	1	1
SERIES INDICATOR BS = Battery Snap	TYPE 1 thru 6	LEADS 1 = Standard length 2 = Special length


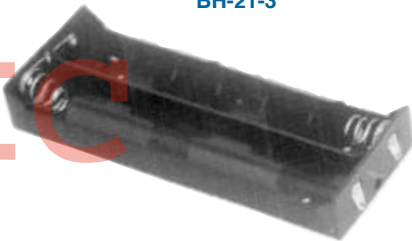
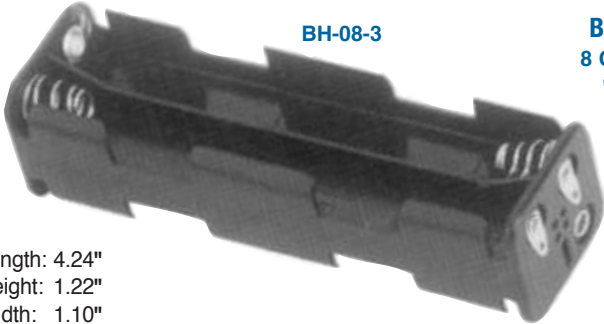
MOBILE BATTERY CONNECTOR

MBC	A	2
SERIES INDICATOR MBC = Mobile Battery Connector	TYPE A thru D	POSITIONS 2 thru 6

BATTERY HOLDERS

ALKALINE - AA, AAA, C, D & 9V

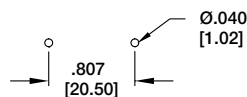
BH SERIES

 <p>BH-01-3</p> <p>BH-01 1 CELL "AA"</p> <p>Length: 2.25" Height: .580" Width: .650"</p>	 <p>BH-13-3</p> <p>BH-13 2 CELL "C"</p> <p>Length: 2.41" Width: .900" Height: 2.21"</p>
 <p>BH-03-3</p> <p>BH-03 2 CELL "AA"</p> <p>Length: 2.26" Height: .590" Width: 1.23"</p>	 <p>BH-14-3</p> <p>BH-14 4 CELL "C"</p> <p>Length: 4.30" Height: 1.01" Width: 2.10"</p>
 <p>BH-05-3</p> <p>BH-05 4 CELL "AA"</p> <p>Length: 2.28" Height: 1.10" Width: 1.22"</p>	 <p>BH-21-3</p> <p>BH-21 6 CELL "D"</p> <p>Length: 2.68" Height: 1.13" Width: 2.85"</p>
 <p>BH-08-3</p> <p>BH-08 8 CELL "AA"</p> <p>Length: 4.24" Height: 1.22" Width: 1.10"</p>	 <p>BH-22-3</p> <p>BH-22 8 CELL "D"</p> <p>Length: 5.15" Height: 2.58" Width: 2.78"</p>
 <p>BH-10-3</p> <p>BH-10 2 CELL "AAA"</p> <p>Length: 2.06" Height: .500" Width: .970"</p>	 <p>BH-24-3</p> <p>BH-24 "9 VOLT"</p> <p>Length: 2.13" Height: .820" Width: 1.19"</p>

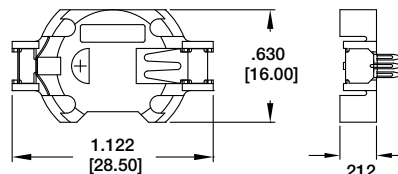
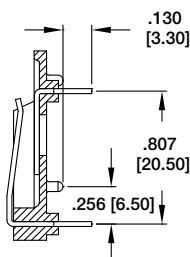
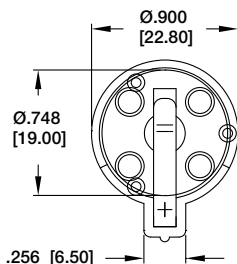


BH-25-1

BH-25-1
COIN CELL BATTERY HOLDER

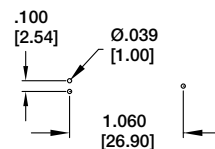


Recommended PCB Layout

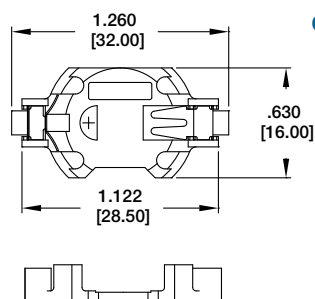


BH-26-1

BH-26-1
COIN CELL BATTERY HOLDER

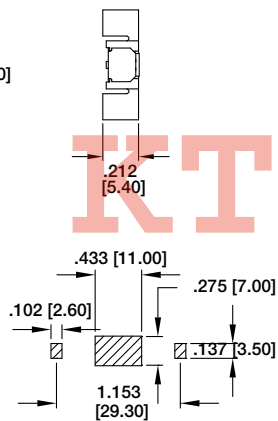


Recommended PCB Layout

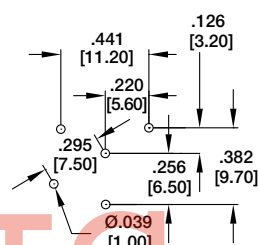


BH-27-5

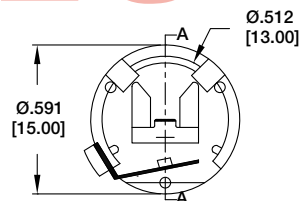
BH-27-5
COIN CELL BATTERY HOLDER



Recommended PCB Layout



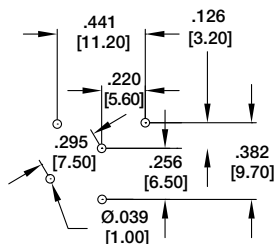
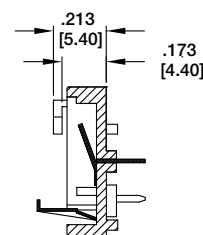
Recommended PCB Layout



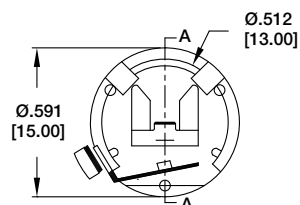
BH-41A-5
COIN CELL BATTERY HOLDER



BH-41A-5

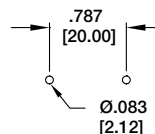
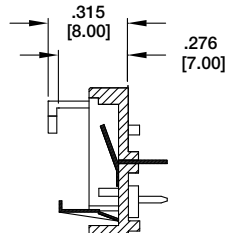


Recommended PCB Layout

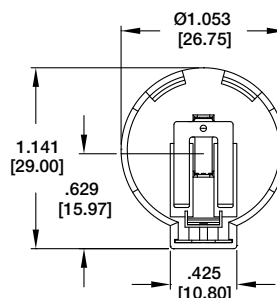


BH-41B-1

BH-41B-1
COIN CELL BATTERY HOLDER



Recommended PCB Layout



BH-32-1
COIN CELL BATTERY HOLDER



BH-32-1

